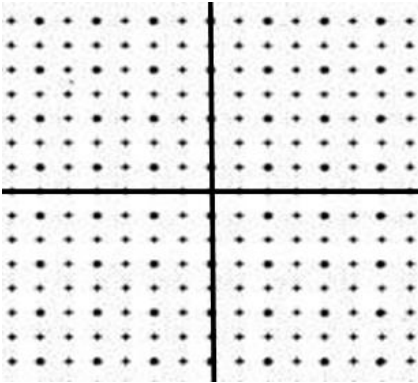


NAME _____ DATE _____

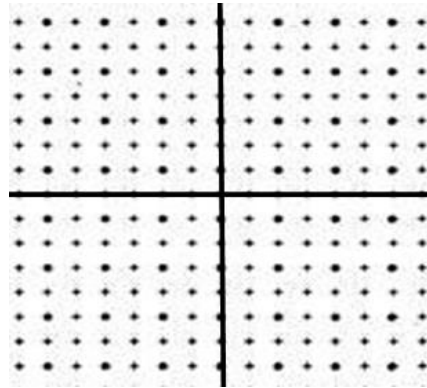
ALGEBRA II WORKSHEET ON TRANSFORMATIONS

Use knowledge of parent functions and transformations to graph each function on the axes provided.

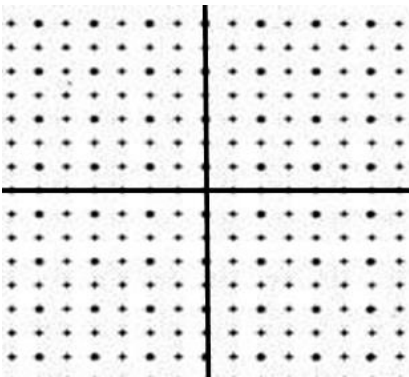
1. $y = x^2 - 3$



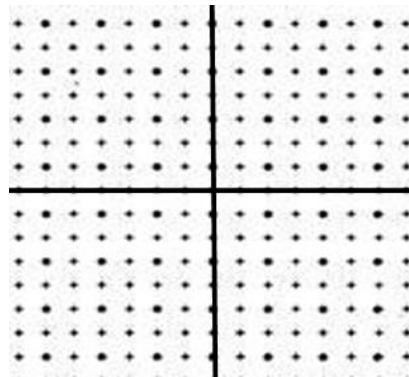
2. $y = -|x + 4|$



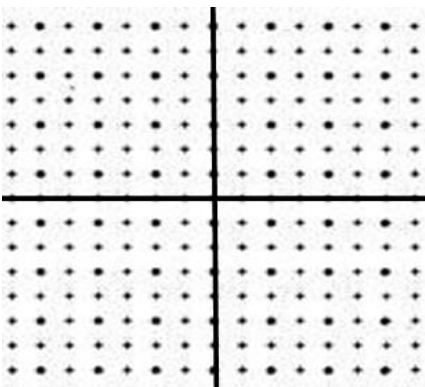
3. $y = -\sqrt{x - 3} + 5$



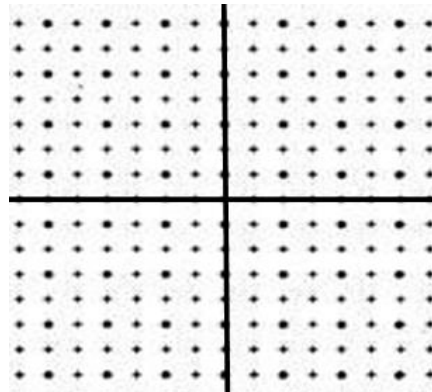
4. $y = -(x + 4)^3 + 1$



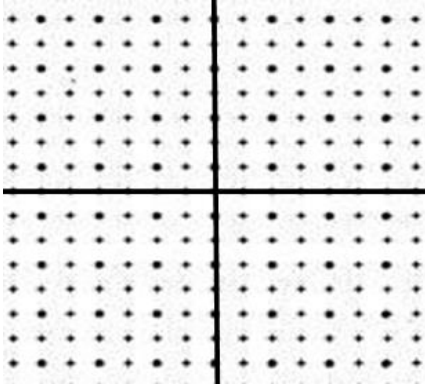
5. $y = \sqrt{-x} - 4$



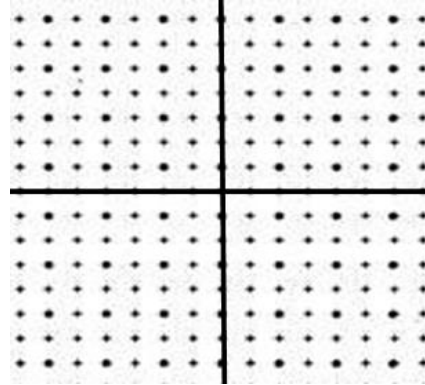
6. $y = -(x - 3)^2 - 1$



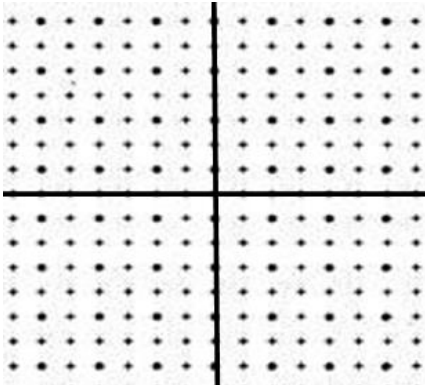
7. $y = (x+3)^3$



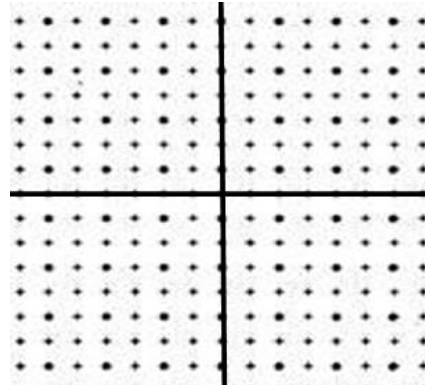
8. $y = 2^{x-3}$



9. $y = -(x-3)^2 + 6$

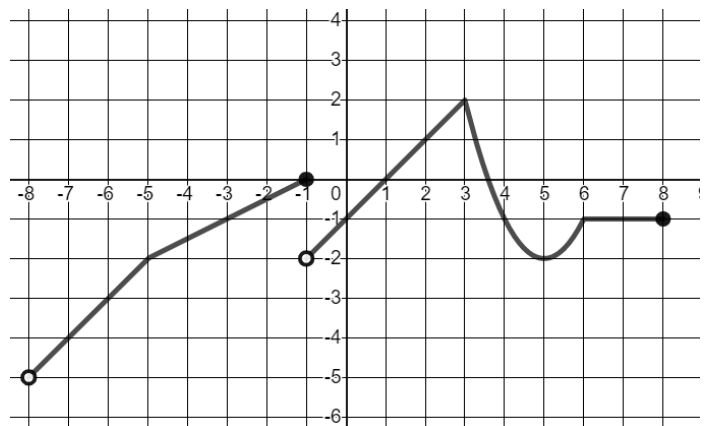


10. $y = 2^{-x} - 3$



11. Determine each of the following for
The function whose graph is shown.

- a. Increasing
- b. Decreasing
- c. Constant
- d. Relative minima
- e. Relative maxima
- f. Absolute minimum
- g. Absolute maximum
- h. Domain
- i. Range



Lengths of Fish (in inches)						
8	9	9	9	10	10	11
11	12	12	12	12	13	13
13	14	14	15	15	16	24

The table above lists the lengths, to the nearest inch, of a random sample of 21 brown bullhead fish. The outlier measurement of 24 inches is an error. Of the mean, median, and range of the values listed, which will change the most if the 24-inch measurement is removed from the data?

- A) Mean
- B) Median
- C) Range
- D) They will all change by the same amount.

Lengths of Fish (in inches)						
8	9	9	9	10	10	11
11	12	12	12	12	13	13
13	14	14	15	15	16	24

The table above lists the lengths, to the nearest inch, of a random sample of 21 brown bullhead fish. The outlier measurement of 24 inches is an error. Of the mean, median, and range of the values listed, which will change the most if the 24-inch measurement is removed from the data?

- A) Mean
- B) Median
- C) Range
- D) They will all change by the same amount.