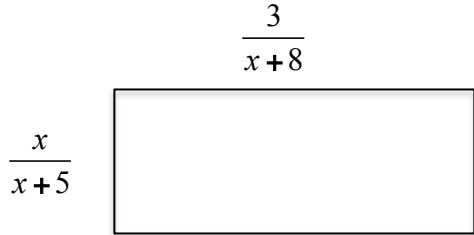
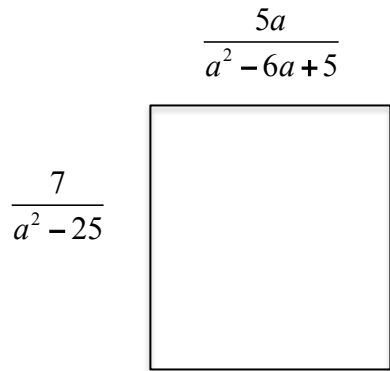


1-3. Find the perimeter of each figure. Simplify your answers, but you may leave the answer in factored form.

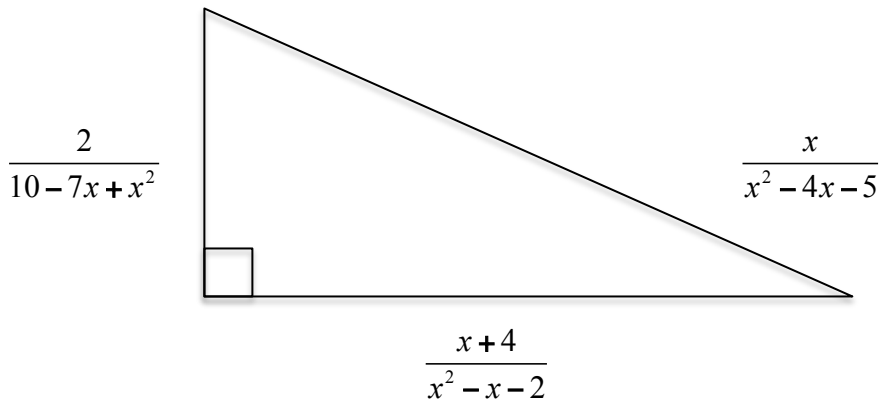
1.



2.



3.

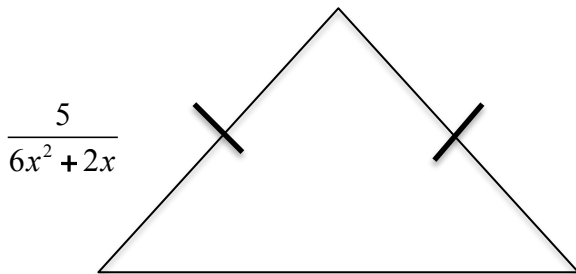


4. The perimeter of the rectangle is $\frac{a^2 - 2a}{a^2 - 3a - 10}$. Find the height of the figure.



$$\frac{4a}{a-5}$$

5. The perimeter of the triangle is $\frac{4x-3}{6x^2-13x-5}$. Find the length of the third side of the figure.



$$\frac{5}{6x^2+2x}$$